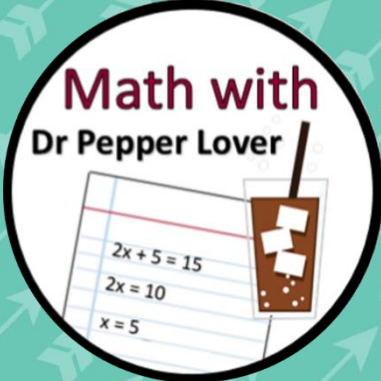


Congruent Triangles

Practice Problems

**Math with
Dr Pepper Lover**

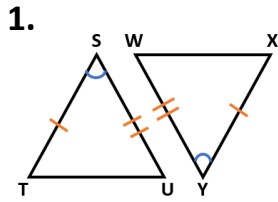


$2x + 5 = 15$

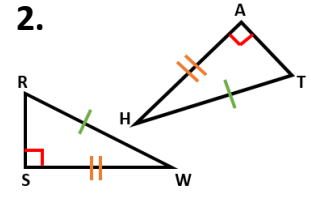
$2x = 10$

$x = 5$

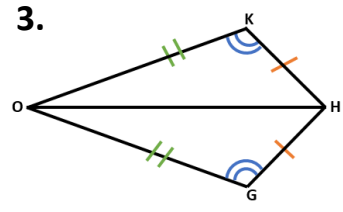
Are the triangles congruent? If yes write the reason and the triangle congruence statement.



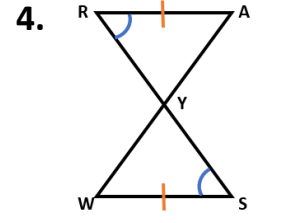
$\triangle STU \cong$ _____



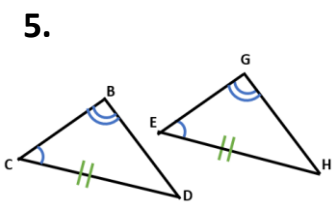
$\triangle RSW \cong$ _____



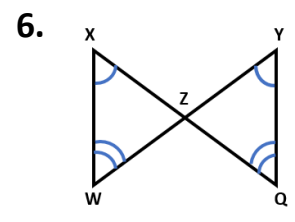
$\triangle OKH \cong$ _____



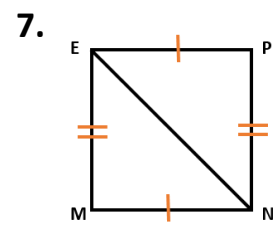
$\triangle RAY \cong$ _____



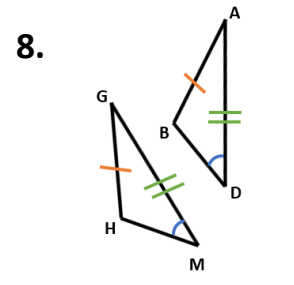
$\triangle CBD \cong$ _____



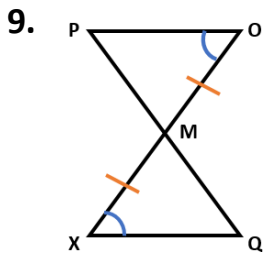
$\triangle WXZ \cong$ _____



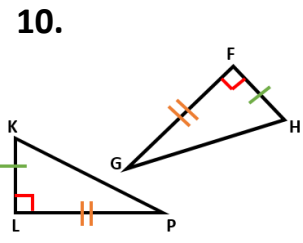
$\triangle MEN \cong$ _____



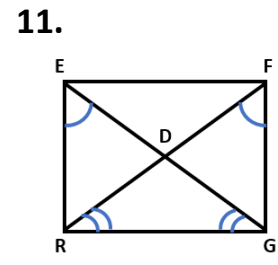
$\triangle GHM \cong$ _____



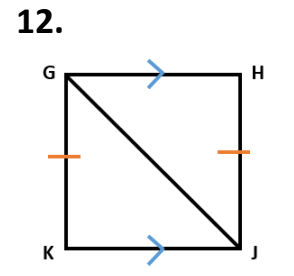
$\triangle POM \cong$ _____



$\triangle KLP \cong$ _____

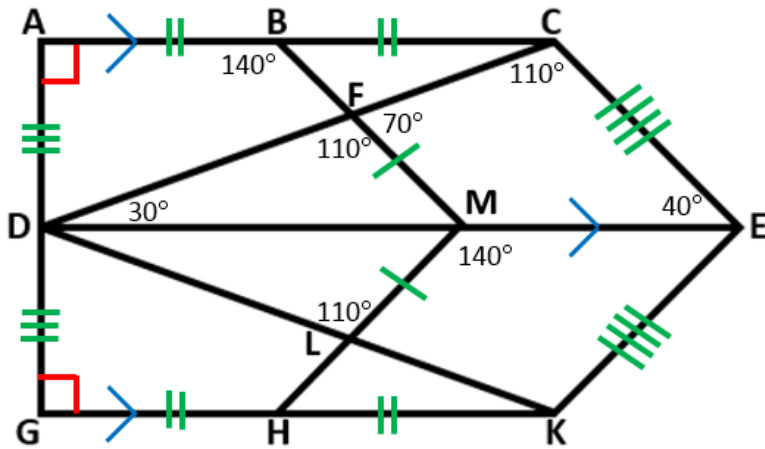


$\triangle EGR \cong$ _____



$\triangle KGJ \cong$ _____

Use the diagram to answer the following questions.



13. Find $m\angle BFC$ _____

14. Find $m\angle ACD$ _____

15. Find $m\angle ADF$ _____

16. Find $m\angle GDK$ _____

17. Find $m\angle LHK$ _____

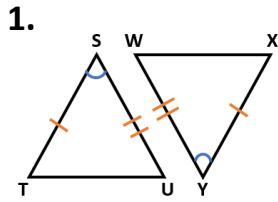
18. Find $m\angle MEK$ _____

19. Find $m\angle DLH$ _____

20. Find $m\angle MLK$ _____

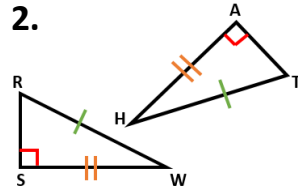
List all of the congruent triangles in the diagram above and give a reason for each congruent pair.

Are the triangles congruent? If yes write the reason and the triangle congruence statement.



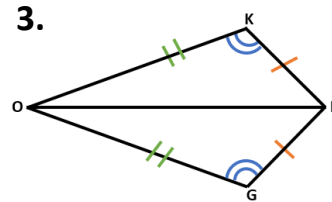
SAS

$\triangle STU \cong \triangle YXW$



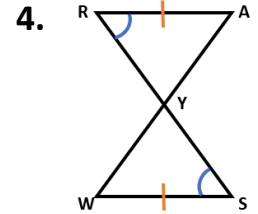
HL

$\triangle RSW \cong \triangle TAH$



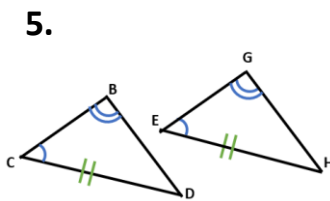
SAS

$\triangle OKH \cong \triangle OGH$



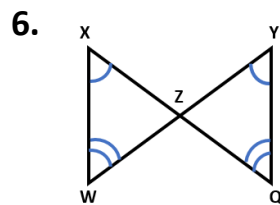
AAS

$\triangle RAY \cong \triangle SWY$



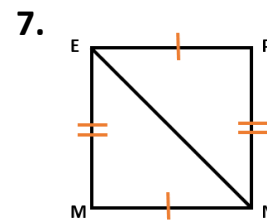
AAS

$\triangle CBD \cong \triangle GEH$



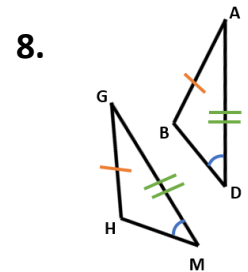
Not congruent

$\triangle WXZ \cong$ _____



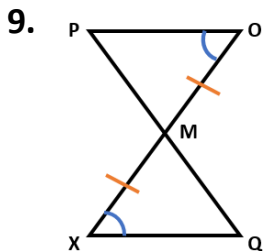
SSS

$\triangle MEN \cong \triangle PNE$



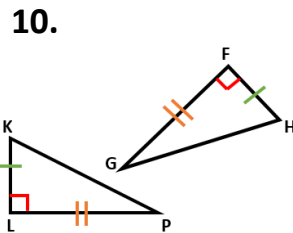
Not Congruent

$\triangle GHM \cong$ _____



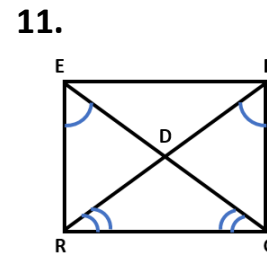
ASA

$\triangle POM \cong \triangle QXM$



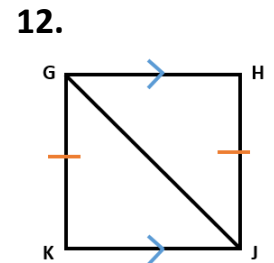
SAS

$\triangle KLP \cong \triangle HFG$



AAS

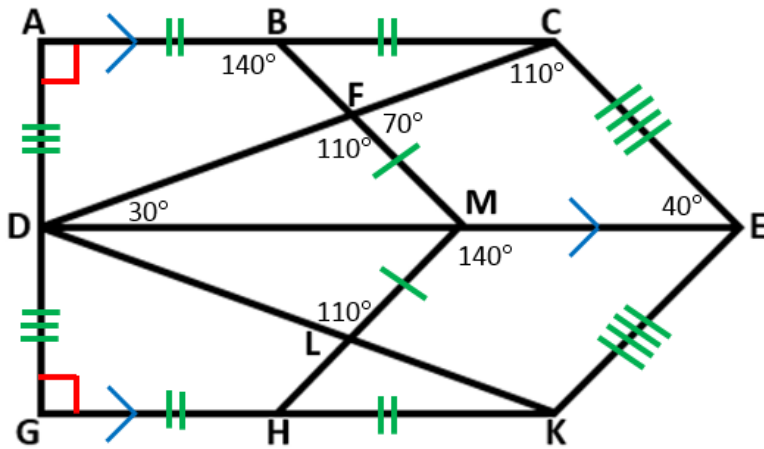
$\triangle EGR \cong \triangle FRG$



Not Congruent

$\triangle KGJ \cong$ _____

Use the diagram to answer the following questions.



13. Find $m\angle BFC$ 110
14. Find $m\angle ACD$ 30
15. Find $m\angle ADF$ 60°
16. Find $m\angle GDK$ 60°
17. Find $m\angle LHK$ 40°
18. Find $m\angle MEK$ 40°
19. Find $m\angle DLH$ 70°
20. Find $m\angle MLK$ 70°

List all of the congruent triangles in the diagram above and give a reason for each congruent pair.

$\triangle ACD \cong \triangle GKD$ by SAS

$\triangle BCF \cong \triangle HKL$ by AAS

$\triangle DFM \cong \triangle DLM$ by AAS or SAS

$\triangle DCE \cong \triangle DKE$ by AAS

Background and Design Elements from:



Fun fonts from:



Be the first to know
about new products
and updates, follow
my store!

